

On 18 May Cornwall Council held a stakeholder workshop which brought together a number of different interest groups.

The comments from the workshop have been used to inform suggestions for the future of the Promenade. The stakeholders raised a number of important questions and these are detailed below.

Cornwall Council would like to get your views on these topics.

### What could the Promenade be used for?

The Promenade is currently used for walking and cycling. It is also used for several events and activities - such as the Golowan Festival and the Race for Life.

Some of the ideas from the stakeholder workshop and previous studies have included using the space as a viewing area for events and activities in the bay and as a performance space for festivals and celebrations.

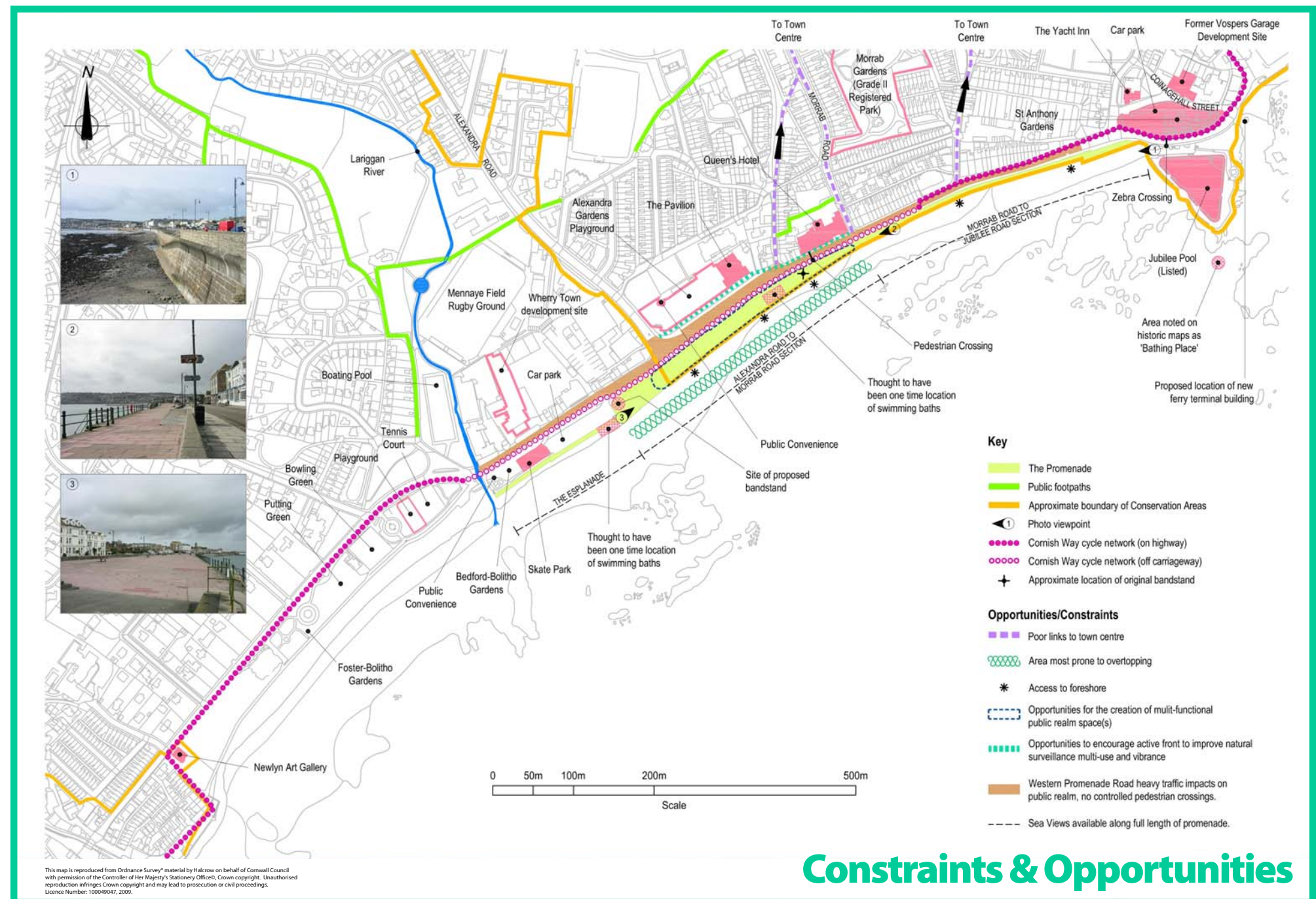
### How can the Promenade best reflect Penzance's distinctive character and culture?

Penzance is a distinctive place with an exciting arts and cultural background. The Council sees an opportunity for the Promenade to reflect all these unique characteristics.

Penzance deserves a Promenade which does the town justice. The Council would like to ensure that any improvements are of a high quality and can stand the test of time.

### What should the Promenade look like?

This is an opportunity to think about what kind of look and feel the Promenade could have. Should Cornwall Council be looking at a simple approach which restores the Promenade to how it once was? Or, should a more contemporary approach be looked at to create a space which has a more modern look?



This map is reproduced from Ordnance Survey material by Halcrow on behalf of Cornwall Council with permission of the Controller of Her Majesty's Stationery Office. Crown copyright. Unauthorised reproduction infringes Crown copyright and may lead to prosecution or civil proceedings. Licence Number: 100049047, 2009.